

DELIVERING  
EXCELLENCE IN  
HEALTHCARE



Jaypee Hospital, Sector 128, Noida 201304, UP, India  
0120 412 2222 | [www.jaypeehealthcare.com](http://www.jaypeehealthcare.com) | Follow us  





**SHRI JAIPRAKASH GAUR**  
Founder Chairman, Jaypee Group

## FOUNDER CHAIRMAN'S MESSAGE

In Jaypee Hospital, I see the future of healthcare in India, a future that will see medical technology transcending all borders and transforming itself to provide best service at the lowest possible cost, a future that will see the dimensions of clinical practices expanding to take healthcare to the masses and a future where people will grow healthier and live happier.

## VISION

Promoting healthcare to the common masses with the growing needs of society by providing quality and affordable healthcare with commitment.

## MISSION

The Jaypee Group is committed to serve the cause of millions who seek dedicated quality and affordable healthcare through its multi-super speciality facility, the Jaypee Hospital. With advanced healthcare facilities, the latest diagnostic services and state-of-the-art technology focused on medical specialities, Jaypee Hospital strives to be the ultimate choice for medical care.

*Experts that put your*

# LIFE FIRST

Jaypee Hospital is equipped with state-of-the-art infrastructure and world-class healthcare services facilitated by India's finest doctors and surgeons. Possessing revolutionary technologies and definitive diagnostic services while assuring the highest standards of patient care, Jaypee Hospital is the ultimate choice for medical care in our country and beyond.



# JAYPEE HOSPITAL

The Jaypee Hospital is a flagship initiative from the Jaypee Group dedicated towards meeting the acute need for quality healthcare in India. A multi-speciality hospital with over 1200 beds, sprawling over 18 acres and easily accessible from Delhi, Noida and the Yamuna expressway, Jaypee Hospital has been designed and constructed to position itself amongst the very few GOLD LEED certified hospital buildings in India.

## HIGHLIGHTS

- More than 400 highly skilled doctors from the world's best institutes
- 1,200 Beds with 525 beds operational in Phase - I
- 150 Critical Care Unit Beds
- 24 Bedded Advanced Neonatal ICU
- Dialysis facility for 60 patients
- 18 Modular OTs & Operating Room with 4 Cath Labs (1st in UP)
- 4 Cardiac Cath Labs including regions only Biplane Cath Lab
- Linear Accelerator & Brachytherapy Suite
- MRI (3.0 Tesla) with HIFU, Cardiac CT Scan with unique spectral imaging facility
- Unique flow motion 64 Slice PET CT technology
- NABH Accredited

# INDEX

## Institute of

- Heart
- Oncology
- Organ Transplant
- Orthopaedics & Spine
- Minimally Invasive Surgery
- Gastrointestinal & Hepatobiliary Sciences
- Neurosciences
- Renal Diseases
- Aesthetic & Reconstructive Surgery
- Mother & Child

## Department of

- Haematology & Bone Marrow Transplant
- Emergency & Trauma
- Critical Care & Anesthesiology
- Respiratory & Critical Care Medicine
- Endocrinology & Diabetes
- Infertility & IVF
- Internal Medicine
- Rheumatology
- Ophthalmology
- ENT
- Radiology
- Laboratory Medicine
- Transfusion Medicine
- Nuclear Medicine
- Sports Medicine & Rehabilitation
- Dental Surgery
- Behavioral Sciences







INSTITUTE OF  
**HEART**

A healthy heart means a healthy you! We at the Institute of Heart, consider it as our responsibility to offer the most advanced heart treatments at Jaypee Hospital. Our distinguished team of highly experienced cardiologists and cardiac surgeons diagnose and treat a full spectrum of heart conditions from preventive care, comprehensive treatment, complex surgeries to rehabilitation services.

## SERVICES

- » Non Interventional Cardiology
- » Interventional Cardiology
- » Heart Command
- » Preventive and Rehabilitative Cardiology
- » Paediatric Cardiology
- » Electrophysiology and Devices
- » Adult Cardiac Surgery
- » Paediatric Cardiac Surgery
- » Vascular Surgery
- » Heart Transplant



## INFRASTRUCTURE & TECHNOLOGY

The Hospital is equipped with single plane and biplane interventional cath labs with unique clarity platform, which is the first of its kind in the country. Four Cath labs with Clarity Platform FD 10 and FD 20 with EP Study facility having features that lead to considerable radiation dose reduction (by almost 45-55%) in coronary studies. Twice the information with a single contrast injection, critical for paediatric examinations.

**64 channel EP lab** for precise electrophysiology procedures including RF ablation & Pacemaker.

**State-of-the-art Hybrid OT** combines the functionality of a CathLab and Modular OT that houses all equipments and monitoring devices necessary to perform Percutaneous Valve Surgeries, Complex Hybrid Aortic Aneurysm Interventions and Minimally Invasive Cardiac Services.

**Biplane Cath Lab with Fractional Flow Reserve (FFR):** Flat Panel Combo Cath Lab with 3D reconstruction and DSA, capability of performing interventional procedures in less time, along with less usage of contrast in neurovascular interventional studies.

**Four Dedicated Cardiac OTs** well equipped with Heart Lung Machines, Hypothermia Machine, Ultrasound with an intra-operative probe, ACT machine, Cell Saver Unit, and Advanced Micro Vascular instruments.

**21 bedded Intensive Coronary Care Unit (ICCU)**

**Seven-bedded dedicated Pre-Post Cath Unit**

### Imaging

3 Tesla MRI | 256 slice CT Scan (Discovery CT750 HD Freedom Edition) with advanced cardiovascular features like snap shot freeze, snap shot assist and cardiac spectral CT | PET CT: Biograph MCT with flow motion technology (first in India) | SPECT-CT







Our team at Jaypee Hospital provides the best treatment, care and support to the cancer patients. We believe in a multidisciplinary treatment approach that involves specialists from various disciplines such as medical, surgical and radiation oncology, pathology, diagnostic radiology, nuclear medicine etc. Our multi-disciplinary team works together to decide the best course of treatment offering the most advanced and personalized care for any type of cancer.

## SERVICES

- » Surgical Oncology
  - Minimal Access Surgical Oncology
  - Gynaecological Cancer
  - Oncoplastic Breast Conservation Surgery & Breast Reconstruction
  - Head & Neck, Oral, Thyroid Cancers
  - Gastro-intestinal & Thoracic Cancer
  - Bone & Soft Tissue Tumors
- » Radiation Therapy
  - IGRT, IMRT, SD, CRT
  - Radio-surgery & Radiotherapy (SRT/SRS/SBRT)
  - Image Guided Brachytherapy
- » Medical Oncology
  - Chemotherapy
  - Targeted Therapy
  - Biological Therapy



## INFRASTRUCTURE & TECHNOLOGY

**Laparoscopic & Thoracoscopic Surgery**

**Structural LV Biopsy**

**HIPEC (Hyper Thermic Intraperitoneal Chemotherapy)**

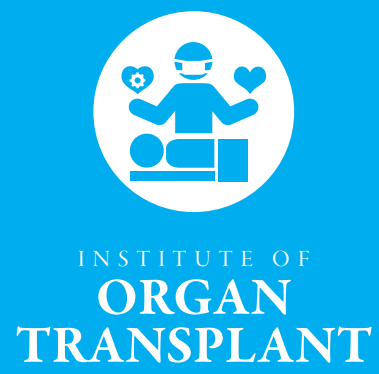
**Radiation**

- Trubeam STx LINAC
- Gama Meet Plan - HDR Brachytherapy

**Medical Oncology:**

- Latest Chemotherapy & Targeted Agents
- State-of-the-art dedicated day care
- Trained Nurses & Support Staff





The Institute of Organ Transplant at Jaypee Hospital consists of a multidisciplinary group of experts who are committed to compassionate patient care throughout the process of organ transplantation which includes patient evaluation, pre-transplant care, transplant surgery and follow-up care.

## SERVICES

- » Heart Transplant
- » Liver Transplant
  - Living Donor Liver Transplant
  - ABO Incompatible (Unmatched Blood Group) Liver Transplant
  - Deceased (Cadaver) Donor Liver Transplant
  - Paediatric Liver Transplant
  - Swap Transplant
- » Kidney Transplant
  - Living Donor Kidney Transplant
  - Deceased Donor Kidney Transplant
  - Paediatric Kidney Transplant
  - Lap Donor Nephrectomy
  - ABO Incompatible (Unmatched Blood Group) Kidney Transplant
- » Gut & Pancreas Transplant
- » Lung Transplant

## INFRASTRUCTURE & TECHNOLOGY

Fully equipped Operation Theatres customized for transplant surgeries

State-of-the-Art Intensive Care Units dedicated for transplant patients

Facility for swift transport of cadaver organs

Blood bank facilities

Advanced Laboratory facilities

Diagnostic and Radiology facilities which include (dual energy) 256 Slice CT scanners, 3Tesla MRI machines, high-end Ultrasound facilities

State- of- the- art CATH Lab for intervention radiology procedures

Isolated ICU and wards for transplant patients to minimize infections

Dedicated well-trained staff for both pre-operative and post-operative care







INSTITUTE OF  
**ORTHOPAEDICS  
& SPINE**

Institute of Orthopaedics & Spine provides personalized treatment using latest technologies. The world-class hospital has facilities that enables early diagnosis, perform cutting-edge procedures with precision and achieve excellent outcomes that help the patients to keep pace with today's moving world.



## SERVICES

### » General Orthopaedics

#### » Joint Replacement

- Total Hip Replacement
- Total Knee Replacement
- Total Shoulder Replacement
- Total Elbow Replacement
- Hand Joint (small) Replacement
- Ankle Joint Replacement
- Revision Hip & Knee Replacement
- Uni-condylar Knee Replacement Surgery
- Surface Replacement of the Hip

#### » Arthroscopy

- Meniscus and cartilage disorder
- Reconstruction of Anterior and Posterior Cruciate Ligament of the Knee
- Shoulder Arthroscopy
  - Bankart & Cuff repair,
  - Subacromial decompression
- Complex Intra-articular and Fracture Treatment

#### » Paediatric Orthopaedics

- Pediatric Fracture & Trauma
- Congenital Limb and Spinal Deformities
- Congenital Dysplasia of Hip (birth related hip problems)
- Club Foot (Twisting foot)
- Bone and Joint Infections
- Juvenile Arthritis

#### » Spine Surgery

- Disc Surgery
- Micro Surgery for Disc
- Fixation Systems for Fractures

- Surgery for Correction of Spinal Deformities
- Surgery for Spinal Tuberculosis

- Endoscopic Spine Surgery

### » Foot & Ankle Sugery



## INFRASTRUCTURE & TECHNOLOGY

We offer wide range of conservative and surgical treatment modalities making use of state-of-the-art facilities like high end radiological suite, X-ray, image intensification, computer navigation system, intra-operative CT scan, high speed MRI, operating microscopes, high definition cameras, and computed radiography procedures.

**Our comprehensive range of clinical rheumatology services** is backed by all major diagnostic facilities like radiology, nuclear medicine, DEXA scanner and comprehensive laboratory facilities.

**Arthroscopic equipment** for performing technically challenging procedures.

**Well equipped tertiary trauma care facility**





INSTITUTE OF  
**MINIMALLY  
INVASIVE  
SURGERY**

The Institute of Minimally Invasive Surgery at Jaypee Hospital strives to provide proficient surgical treatment using advanced laparoscopic techniques and procedures that offer minimal pain, minimal scarring, shorter hospital stay, small recovery time and good cosmetic results.



## SERVICES

- » **Bariatric Surgery**
  - Adjustable Gastric Banding (AGB)
  - Roux-en-Y Gastric Bypass (RYGB)
  - Biliopancreatic Diversion with a Duodenal Switch (BPD-DS)
  - Sleeve Gastrectomy (SG)
- » **Minimally Invasive HPB & Gastro Surgery**
  - Appendectomy
  - Cholecystectomy
  - Splenectomy
  - Hiatus Hernia Repair
  - Colonic & Rectal Cancer Surgery
  - Diverticulectomy
  - Inflammatory Bowel Disease Surgeries
  - Rectal Prolapse Repair
  - Esophageal Cancer
  - Gastric Cancer
  - Staging Laparoscopy for GI Cancers
  - CBD Exploration
- » **Minimally Invasive Genitourinary Surgery**
  - Nephrectomy
  - Pyeloplasty
  - Upper Tract Urolithiasis
  - Bladder Carcinoma
  - Prostate Cancer
  - Varicocele
  - Upper Tract Malignancies
- » **Miscellaneous Laparoscopic Surgery**
  - Inguinal Hernia
  - Umbilical / Ventral Hernia
  - Incisional Hernia
  - Diagnostic Laparoscopy
  - Adhesiolysis



## INFRASTRUCTURE & TECHNOLOGY

**3 state-of-the-art Modular Operation Theatres with laminar flow air-conditioning system that ensures low infection rate.**

**16 Post-operative beds to ensure that proper post surgical care is provided to the patients**

**10 Surgical ICU beds to provide holistic care to the patients**

**Advanced medical equipments such as laparoscopic units with recording systems and provision for video data storage are available along with full HD video cameras and monitors.**





INSTITUTE OF  
GI &  
HEPATOBILIARY  
SCIENCES

The Institute of Gastrointestinal & Hepatobiliary Sciences at Jaypee Hospital specializes in the prevention, comprehensive evaluation and treatment of the diseases of GI tract and the liver pancreas and biliary tract. It is supported by a dynamic team of interventional radiologist, nuclear medicine specialist, radiation oncologist, medical oncologist, endocrinologist and nutritionist. The Department is also running a comprehensive metabolic surgery and weight loss program.

## SERVICES

- » Adult and Paediatric Gastroenterology and Hepatology
- » Diagnostic and Therapeutic Upper & Lower GI Endoscopy
- » All Pancreatic & Biliary ERCP Procedures
- » Diagnostic and Therapeutic EUS
- » Bariatric & Metabolic Surgery
- » Esophageal & Gastric Surgery
- » Hepato-Biliary Surgery
- » Pancreatic Surgery
- » GI Surgical Oncology
- » Colorectal Surgery



## INFRASTRUCTURE & TECHNOLOGY

The state-of-the-art Endoscopy suite is well-equipped with ultra modern video endoscopes with facility for two endoscopy labs backed by modern intensive care units to carry out various endoscopic procedures.

**Endo Suite** is available that helps obtaining real-time moving images of the structures of a patient through the use of a Fluoroscope.

**Endoscopy with ERCP:** Endoscopic Retrograde Cholangio-pancreatography (ERCP), a combination of endoscopy and fluoroscopy is used during ERCP investigations to diagnose and treat certain problems of the biliary or pancreatic ductal systems.

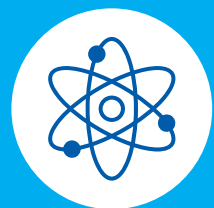
**Endoscopic ultrasound** that helps obtaining precise imaging and early diagnosis of GI Cancer

**Minimally Invasive Surgery:** High-end Karlstorz laparoscopic systems are used for various advanced laparoscopic GI and HPB surgical procedures causing lesser pain, early recovery and excellent results.

Modular OT with all latest technological supports like CUSA (Integra), Argon Plasma Coagulation, Harmonic Scalpel, Enseal, Ligasure, Intra operative Ultrasound and Fluoroscopy for complex GI & HPB Surgery.







INSTITUTE OF  
**NEUROSCIENCES**

The Institute of Neurosciences at Jaypee Hospital is formed by highly skilled neurosurgeons, neurologists, interventional neuroradiologists, neuroanaesthetist & intensivists who uphold the ethos of patient-centred care. Our team combines expertise and individual excellence that compliments the cutting-edge technology and a world-class environment. We work with the best of imaging and precision equipments for complex procedures and are engrossed in providing treatment outcomes of global standards.

## SERVICES

- » **Neuro Surgery**
  - Brain Tumor
  - Head Injury
  - Functional Neurosurgery (DBS)
  - Neuro Endoscopy (Including Pituitary Tumor Surgery)
  - Spine Surgery (Minimally Invasive, Slipped Disc, Spine Tumor, Pedicle Screw Fixation)
  - Paediatric Neurosurgery
  - Stereotactic Surgery
  - Stroke Surgery
  - Cerebrovascular Surgery
- » **Neurology**
  - Headache (Migraine, Cluster, Tension, etc.)
  - Parkinsonism & other Degenerative Disorders
  - Epilepsy (Epileptic Clinic)
  - Dementia (Including Alzheimer's)
  - Stroke Management (Thrombolysis)
  - Infective Meningitis / Encephalitis / Encephalopathy
  - Muscle Disease
  - Neuropathies (GBS, CIDP, Diabetic)
  - Paediatric Neurology
  - Botox Therapy (HFS, Spasticity, Dystonia, Blepharospasm, Writer's cramp)
  - Neurophysiology (NCV, EEG, EMG, Evoked Potentials)
  - Back Pain, Neck Pain, Neuropathic Pain
  - Acute Neurological Emergencies
- » **Neuro Intervention**
  - Endovascular Procedure (Coiling of Aneurysm)
  - Stenting & Coiling
  - Glue Treatment of AVM



## INFRASTRUCTURE & TECHNOLOGY

With 2 Neuro OTs and 15 beds dedicated to Neuro ICU, our infrastructure is equipped to handle any kind of neurological disorders ranging from minor headaches to the most complex neurosurgical procedures. Facilities like Biplane cathlab, video EEG, neuro navigation, modular OT and 3.0 Tesla MRI machine aid our surgeons in making a fast and accurate diagnosis.

**Bi Plane Cath Lab:** The Philips Bi Plane Cath lab is the best and the latest technology that ensures a clear image of the blood vessels. It helps the surgeon to detect and treat even the most deep seated aneurysms and also enables to pin point the exact location of the infected/ruptured blood vessels.

**Video EEG:** The Video EEG monitoring is the latest technology used in monitoring the functioning of the brain for a continuous period of time. Video EEG enables the doctor to monitor the patient for a prolonged period of time. The episodes of Epilepsy can be monitored in a much more effective way than in a normal EEG.

**Neuro Navigation:** Neuro navigation allows the neurosurgeons to navigate within the confines of skull/vertebral column during the surgery. It allows the surgeons to visualize the patient's anatomy in 3D prior to and during the surgery while also seeing the exact location of their surgical instrumentation.

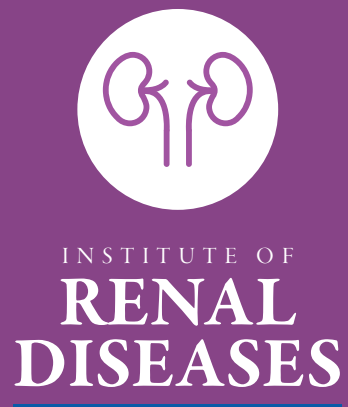
**Modular OT:** Two dedicated Neuro OTs fitted with high end microscopes enable the surgeons to pin point the accurate site of the tumor and resect it successfully. A full range of neuro endoscopes are used to assist the most complex of neurosurgical cases.

**3.0 Tesla MRI Machine:** The 3.0 tesla MRI machine is the first point of imaging for most of the neuro patients which helps in the best diagnosis and decision making for the doctors and unmatched treatment outcomes to the patients.

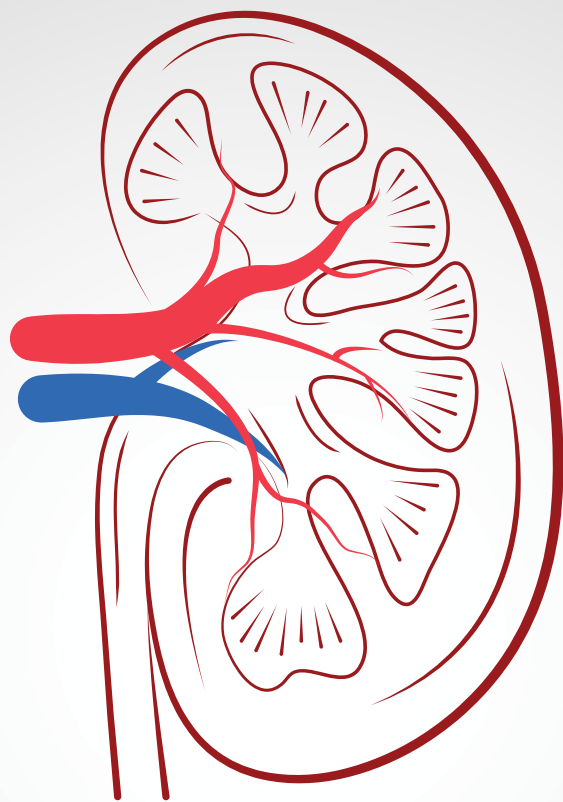
**Neuro Endoscopy:** Neuro Endoscopy allows neurosurgeon to perform procedure with minimal refraction.







The Institute of Renal Diseases provides a complete range of consultative, diagnostic and treatment services for patients with kidney diseases. It focuses on the well being of patients by tailoring treatment options and improve their quality of life.



## SERVICES

### » Nephrology

- Chronic Kidney Diseases/End-Stage Renal Diseases
- Hypertension & Hypertensive Kidney Diseases
- Acute Kidney Injury & Critical Care
- Interventional Nephrology & Vascular Access
- Haemodialysis Services, CRRT, SLEDD
- CAPD
- Paediatric Nephrology
- Kidney Transplant
- Living Related Kidney Transplant
- Cadaveric Kidney Transplant
- Post Kidney Transplant Clinic

### » Urology

- Laser Surgery for Prostate & Stone
- Minimal Invasive Surgeries
- Flexible Uretero-Renoscapy Advnace Extracorporeal Lithotripsy
- TRUS Guided Prostate Biopsy
- Uro-Oncology
- Paediatric Urology
- Reconstructive Urology
- Andrology/Sexology/Penile Implants
- Urodynamic Lab
- Male Infertility
- Laser & Bipolar Prostate Surgery



## INFRASTRUCTURE & TECHNOLOGY

**Dialysis:** Volumetric controlled computerised bicarbonate membrane based haemodialysis machines with adjustable sodium facility, double Reverse Osmosis (RO) system for water purification to maintain international standards of water quality ensures patient safety and prevents long term complications of haemodialysis, CRRT machines. We are one of the few centres to provide SLEDD (Sustained Low Efficiency Daily Dialysis) and MARS (Molecular Adsorbent Re-circulating System).

**Solid Organ Transplant:** State-of-the-art technology and equipments coupled with dedicated modular operation theatre for Transplant Surgeries, dedicated Transplant ICU of international standards.

**Lithotripsy:** The latest Electromagnetic Lithotripsy technology with both X-ray & Ultrasound controls available, positioning, focusing and delivery of shock waves controlled by advanced computerised system with safety cut-offs to prevent damage caused by human error. This is a day-care procedure that does not require hospitalisation stay.

**Flexible scopes and laser lithotripsy for intra-renal stone surgery:** Flexible scopes are passed through the urethra and stones are removed after breaking into smaller pieces by laser.

**Laparoscopic Donor Nephrectomy:** Now donor can donate one of the kidneys without much pain and discomfort.



INSTITUTE OF  
**AESTHETIC &  
RECONSTRUCTIVE  
SURGERY**

The Institute of Aesthetic & Reconstructive Surgery is the forerunners in the field of plastic and reconstructive surgery. Our surgeons change lives by correcting facial deformities and repairing damage to the face, body or limbs. We combine technique and technology with dedication for the well-being of every patient which ensures that each patient has the best opportunity for a successful outcome, regardless of how small or complex the procedure is.

## SERVICES

### » Hair Transplant

### » Facial Aesthetic Procedures

- Blepharoplasty
- Brow Lift
- Eyebrow and Forehead Rejuvenation
- Facial Rejuvenation
- Face Lift
- Genioplasty (Chin Contouring)
- Scar Revision
- Rhinoplasty (Nose Shaping or Conturing)
- Otoplasty (Alteration of Ears)
- Fat Grafting

### » Body Contouring Procedures

- Contouring of Abdomen, Thighs and Buttocks
- Abdominoplasty (Tummy Tuck)
- Chin / Neck Liposuction
- Brachioplasty (Contouring of Arms)
- Buttock Implants/ Buttock Augmentation
- Calf Implants
- Spot Liposuction

### » Breast Aesthetic Procedures

### » Female Genital Procedures

- Vaginoplasty, Labiaplasty (Female Genital Rejuvenation)
- Hymenoplasty (Hymen Repair)

### » Laser Procedures

- Face Rejuvenation
- Abdominoplasty
- Hair Removal
- Skin Tightening
- Scar Correction
- Acne Scar Removal

### » Reconstructive Surgery

- Hand & lower limb trauma
- Fingers & limb replantation
- Reconstruction of post traumatic defects
- Onco Surgical reconstruction

- Reconstructive microsurgery for soft tissue & bone defects
- Reconstructive surgery for burns & Rehabilitation

### » Hand

- Acute & delayed tendon, nerve, muscle & artery repair
- Tendon transfers
- Brachial plexus surgeries
- Nail deformity & finger tip injuries
- Congenital hand anomalies
- » **Paediatric Plastic Surgery for Congenital Anomalies**
- Cleft lip & palate
- Congenital craniofacial,

- hand & or urogenital abnormality
- Microtia/Ear deformities

### » Others

- Tattoo Removal
- Vascular Blemishes / Spider Veins
- Hand Rejuvenation
- Nail Correction
- Ear Lobe Repair
- Mole Removal
- Botox & Fillers
- Microdermabrasion & Dermaroller
- Chemical Peels



## INFRASTRUCTURE & TECHNOLOGY

Advanced instruments for Endoscopic Plastic Surgery

Advanced Wound Closure System

Revolutionary Liposuction & Lipoinjection System

Operating Microscopes for Microneural and Microvascular Surgery





INSTITUTE OF  
**MOTHER  
& CHILD**

The Institute of Mother & Child Care offers comprehensive care for women & children. It not only provides full care for the reproductive issues but also offers comprehensive neonatal and paediatric care with principles of modern medicine in a friendly environment. The institute has onboard highly skilled doctors and latest equipments for advanced hysteroscopy & laparoscopy for female gynaecological problems.

## SERVICES

### » CENTRE FOR MOTHER CARE

- Conventional Gynaecology
- Gynae-Oncology
- Assisted-Reproductive Technology such as IVF-ET, ICSI, AH, Sperm and embryo freezing and retrieval
- Foetal Medicine and Antenatal Care
- High-risk Obstetrics
- Labour Management
- OPD Services and Day Care Services
- Minimal Access Surgery such as Laparoscopy and Hysteroscopy

### » CENTRE FOR CHILD CARE

- Advanced Neonatal Care
- Paediatric Care



## INFRASTRUCTURE & TECHNOLOGY

The Institute offers highly advanced diagnostic and therapeutic techniques with accurate precision for various obstetrical, gynaecological conditions, neonatal and paediatric care.

**Foetal Echocardiography:** To diagnose foetal cardiac conditions.

**Colour Doppler Ultrasound:** Real-time 4D probe with biopsy guide, surface rendering technology and spatial representation of vascularity helps in diagnosing pelvic anatomical defects, foetal anomalies, high-risk pregnancies and ovarian cancers.

**Neonatal care:** Equipped with state-of-the-art facilities for the comprehensive care of the neonatals including monitors, incubators, warmers, LED phototherapy units, C-PAP, ventilators, eye and hearing screening equipments & transport incubator for pre mature babies

**Paediatric Care:** The Paediatric ICU is a well-equipped 8 bedded state-of-the-art facility backed by all Paediatric super specialities.





DEPARTMENT OF  
**HAEMATOLOGY  
& BONE MARROW  
TRANSPLANT**

Our Haematologists offer the best treatments for patients with acute and chronic blood disorders. Bone Marrow Transplant, also known as stem cell transplant is often the only curative option for a number of blood disorders. There have been a number of advances in the field of stem cell therapy, expanding the indications of transplants. Also with the advent of better infection control mechanisms, and advent of reduced intensity or 'mini' transplants, this therapy can be offered to older individuals as well. With the techniques of haploidentical or half-matched transplants becoming better, now almost every person in need for a transplant can be offered one.

## SERVICES

- » Autologous Stem Cell Transplant for disorder such as myeloma, lymphoma & certain autoimmune disorders
- » Matched Sibling Allogeneic Stem Cell Transplantation for disorders such as acute & chronic leukemia, aplastic anemia, thalassemia etc.
- » Haploidentical or half match transplant from parent or child when a matched sibling is not available Matched Unrelated Transplant through worldwide donor registries
- » Chemotherapy & targeted therapy for a number of blood cancers
- » Management & counseling for non-cancerous blood disorders such as thalassemia, aplastic anemia, iron deficiency anemia, immune thrombocytopenia etc.



## INFRASTRUCTURE & TECHNOLOGY

**HEPA filter rooms:** State-of-the-art closed and dedicated 6 bedded Bone Marrow Transplant Unit with special positive pressure rooms with HEPA filters for infection prevention.

**Chemotherapy Inpatient Unit:** This unit is fully equipped with trained nurses specially trained for administering chemotherapy

**Chemotherapy Daycare Unit:** Fully equipped daycare unit for quick and safe administration of chemotherapy

**Hematopathology:** Expert lab services and trained personnel available including services such as bone marrow examination, flowcytometry, immunohistochemistry etc.

**Blood Bank and Apheresis Unit:** A state-of-the-art blood bank with 24/7 availability of all services and all kinds of blood products. Automated Grouping cross matching-ImmucoreNeo, Individual Donor technology NAT-Navartis, Comtec Apheresis equipment with platelet apheresis, stem cell and therapeutic procedure on single platform, Integrated dry chemistry analyzer







## DEPARTMENT OF EMERGENCY & TRAUMA

The fully equipped emergency & trauma centre at Jaypee Hospital is manned by in-house trauma surgeons who are available 24/7 to handle both medical and surgical emergencies ranging from simple resuscitation procedures to complex poly trauma cases. Trauma care is delivered by a multidisciplinary team of skilled doctors in split second time and transferred to respective departments for further management.

## SERVICES

- » **Specialised Services:**
  - 4 Tier Triage System
  - Observation area
  - Heart Command
  - Trauma Centre & Operation Theatre
- » **Emergency Medical Services:**
  - Air Evacuations
  - Evacuations
- » **Each of our Air Or Surface Ambulance is Equipped with:**
  - Mobile Ventilator
  - Cardiac Monitor
  - Defibrillator
  - Oxygen Infusion Pump
  - Team of Trained DoctorsConnected through Tele-medicine & GPRS



## INFRASTRUCTURE & TECHNOLOGY

**Emergency ICU:** Eight bedded emergency ICU ensures that no time is wasted in transferring the patient on ventilator support to the ICU's.

- Most advanced mechanical ventilators (invasive and non-invasive) with High Frequency
- Oscillatory Ventilators (HFOV)
- Advance Cardiac and Vital Monitoring Systems
- Latest life resuscitative units for immediate life support
- ECMO (Extra corporeal membrane oxygenation) for refractory respiratory or cardiac failure
- Ultrasound guided central venous and arterial catheterization for hemodynamic monitoring
- Portable ultrasonography for point of care assessment
- Bedside Dialysis, Echocardiography and Plasmapheresis units

**Triage:** We have a five bed triage where the patients are prioritized according to the severity of the condition. This ensures that the patient with the most severe condition is given treatment first.

**Ambulance Command Center:** Ambulance command center ensures that when a call is made on 1800-102-9-102, the emergency response system is immediately activated







## DEPARTMENT OF CRITICAL CARE & ANESTHESIOLOGY

Our Department of Critical Care and Anesthesiology is dedicated to management of critically ill patients and anesthetic management of complex surgeries. The Department is manned round the clock by in house dedicated team of highly qualified intensivists to provide world class care to very sick patients of all age groups of varying illnesses.

## SERVICES

### » ICU:

- Round the clock bed side, Ultrasonography (FAST), transthoracic ECHO, transesophageal ECHO (TEE), Doppler examination and supervision by experienced and qualified intensivist
- Advanced invasive / non invasive ventilation
- Dedicated ICU for different subspecialties (Neuro, cardiac, gastro, trauma, general surgery and transplants)
- Bedside hemodialysis and CRRT
- Trauma ICU attached with trauma OT
- Ultrasonography guided cannulation

### » Anesthesiology:

- Advanced anesthetic management for on pump and off pump cardiac surgeries
- Total circulatory arrest for aortic surgeries
- Specialised anesthetic management for robotic and minimally invasive surgeries
- Specialised anesthesia technique for Liver, kidney, knee and hip transplant
- Dedicated neuroanesthesia team for advanced neuro surgery (Brain suite) and neuro radio interventions
- Ultrasonography guided cannulation and regional anesthesia
- Patient Controlled analgesia (PCA)



## INFRASTRUCTURE & TECHNOLOGY

- **150 beds ICUs**
- **24 bedded Level III NICU**
- **1:1 Patient Nurse ratio**
- **Centralized monitoring**
- **Advanced hemodynamic, ICP, IAP monitoring**
- **Pneumatic chute for rapid transport of sample, pharmaceuticals & blood**
- **Controlled hypothermia**







DEPARTMENT OF  
**RESPIRATORY &  
CRITICAL CARE  
MEDICINE**

The Department of Respiratory & Critical Care Medicine is a well-equipped facility committed to transforming scientific findings into effective treatment options required for respiratory diseases, critical medical disorders and sleep disorders.



## SERVICES

- » Flexible Bronchoscopy
- » Endobronchial Ultrasound (EBUS)
- » Medical Thoracoscopy
- » Rigid Bronchoscopy
- » Critical Care Medicine
- » ECMO (Extra Corporeal Membrane Oxygenation)
- » PFT Laboratory
  - Spirometry
  - Diffusion Study
  - Body Plethysmography
- » Bronchial Artery Embolisation Towns
- » Sleep Study



## INFRASTRUCTURE & TECHNOLOGY

**Bronchoscopy Unit:** Equipped with advanced bronchoscopy system for diagnostic and therapeutic procedures.

**EBUS (Endo Bronchial Ultrasound):** This is specifically designed for diagnostic biopsies for mediastinum and staging in the lung cancer.

**Medical Thoracoscopy Unit:** Helps to visualize and intervene in patients having various types of pleural diseases with more precautions.

**Pulmonary Function Testing (PFT) Lab:** There are 2 pulmonary function laboratories that ensure accurate results in Spirometry, Diffusion studies of lungs and Body Plethysmography.

- **Spirometry and Diffusion (DLCO):** Portable PFT device with automatic calibration technology for slow & forced spirometry, and single breath CO Diffusion for DLCO with Trueflow ultrasonic flow sensor technology.
- **Body Box:** The Body Box 5500 series is a pulmonary function instrument with a quick-release absorber ensuring full fidelity gas analysis.

**Intensive Care Unit:** The 150 bedded fully-equipped ICU offers latest monitoring facilities, excellent backup system, and highly advanced ventilators.

**ECMO (Extra Corporeal Membrane Oxygenation):** ECMO is an extracorporeal technique of providing cardiac and/or respiratory support to refractory respiratory & heart failure patients.

**Sleep Lab:** It has 24 channel sleep system to carry out polysomnography studies. The sleep laboratory is the most sophisticated laboratory having additional sensors, hardware and latest software.





DEPARTMENT OF  
**ENDOCRINOLOGY  
& DIABETES**

The Endocrinology & Diabetes Department at Jaypee Hospital is a speciality that deals with diseases of hormones produced by the endocrine glands. Our endocrinologists specialize in the diagnosis and treatment of hormone-related diseases such as diabetes, metabolic disorders, thyroid diseases etc. We offer a comprehensive management of endocrine diseases that ensures high quality of life, prevention of complications and improvement in life expectancy.

## SERVICES

- » Diabetes
- » Thyroid Diseases
- » Obesity
- » Medical Weight Management Program
- » Hirsutism
- » Gynaecomastia
- » Lack of sexual development in boys and girls
- » Early development of secondary sexual characteristics in boys & girls
- » Growth retardation or short stature
- » Sexual Problems and Infertility
- » Menstrual Problems
- » Ambiguous Genitalia
- » Metabolic Bone Disease
- » Adrenal Diseases
- » Pituitary Diseases



## INFRASTRUCTURE & TECHNOLOGY

At Jaypee Department of Endocrinology, Diabetes & Hormones we are fully equipped to offer world class investigative and therapeutic services for all kinds of endocrine diseases.





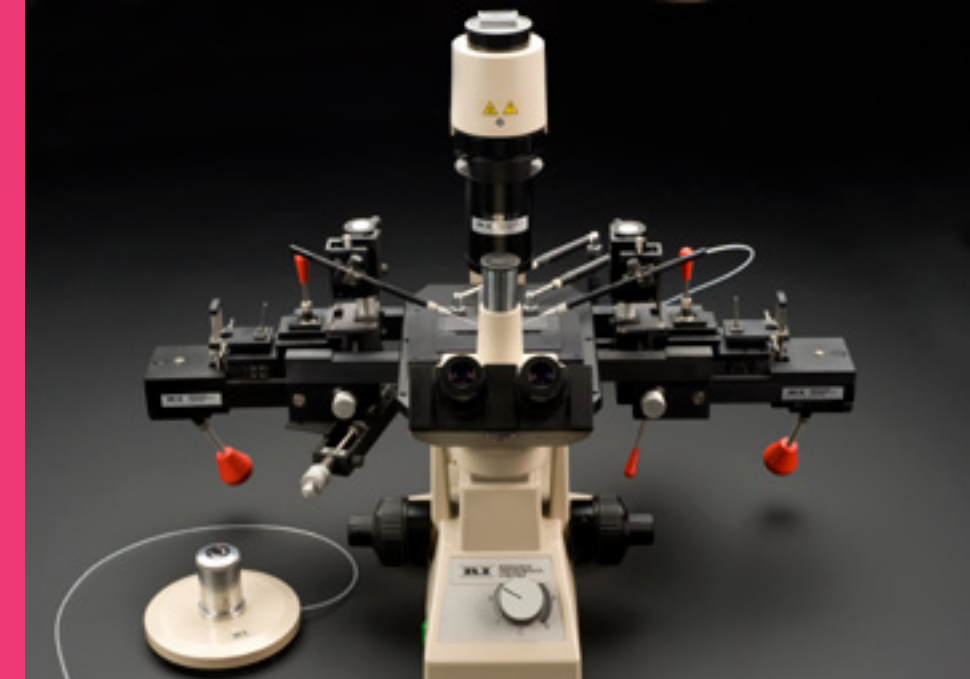


## DEPARTMENT OF INFERTILITY & IVF

The Department of Infertility & IVF offers the most sophisticated and advanced Assisted Reproduction Unit (IVF Lab) with latest technology. We have highly skilled and experienced fertility specialists, in-house competent embryologists and the support of the best diagnostic modalities and laboratory services to give you better advice regarding your treatment options and help you decide the treatment that best suits you.

## SERVICES

- » Advanced fertility consultation and assessment
- » Male fertility Clinic
- » Advanced Fertility Pelvic Ultrasound
- » Ovulation Induction
- » IUI (Intra Uterine Insemination )
- » IVF (In Vitro Fertilisation)
- » ICSI (Intra Cytoplasmic Sperm Injection )
- » Blastocyst Embryo Transfer
- » Sperm Donor Program
- » Donor Egg Program
- » Embryo Freezing
- » Donor Embryo Program
- » Frozen Embryo Transfer
- » Fertility Preservation
- » Surgical Sperm Retrieval - PESA/ TESA/TESE/Micro TESE
- » Reproductive Surgery
- » Reproductive Endocrinology
- » Recurrent Pregnancy Loss



## INFRASTRUCTURE & TECHNOLOGY

- State of the art IVF Lab & OT Facility equipped with Sophisticated Microscopes, CO2 Incubators, bench top incubators, Laminar Flows and Micro Manipulators backed by state of the art HEPA filtration system and air handling units for optimized air quality, temperature and humidity in the lab
- Extremely stringent QC/QA protocols for optimal functioning of the lab and maintaining excellent air quality. The lab and the adjoining theatres are built according to international recommendations and guidelines of assisted reproduction authorities namely the HFEA and ESHRE
- Ultrasound Facility: With facility of Diagnostic and Intervention, 4 D Ultrasound with the Color Doppler.
- IVF OT Facility: Ultra modern Theatre equipped for Oocyte Pick Up & Embryo transfer
- Cryopreservation Room: Equipped with Embryo Freezer and Cryo-Cans for Sperm and Embryo Freezing
- Operative Video Laparoscopy Facility: Facility for PCOD, Endometriosis and Fibroid removal, Peri-Ovarian and PeriTubal adhesions





## DEPARTMENT OF INTERNAL MEDICINE

A comprehensive facility catering to general and preventive care medicine for adults as well as geriatrics; fully-supported by major super-specialties to provide end to end services varying from clinical diagnosis, preventive medicine, wellness programs, preventive health checks, rehabilitation services to management of certain medical conditions. From routine exams to diagnosing and managing adult conditions, our internal medicine doctors offer a broad range of primary care services, as well as an in-depth knowledge and expertise in areas like cardiology, respiratory and critical care medicine. With an intent to serve the community, the department has also conducted numerous outreach camps in neighbouring towns and cities to provide medical support ongoing basis.

## SERVICES

- » Hypertension
- » Diabetes
- » Obesity & Weight Management
- » High Cholesterol
- » Drug Overuse
- » Management of Anemia
- » Animal Bites
- » Environmental Disease
- » Preventive Health Check
- » Infectious Diseases Clinic
- » Geriatrics Clinic
- » ART Clinic
- » Chronic Diseases
- » Toxicology
- » Lifestyle Counseling



## INFRASTRUCTURE & TECHNOLOGY

We provide holistic medical care attending to all clinical and surgical extremities supported by latest diagnostics, high-end imaging facilities comprising 24x7 functional services like blood bank, radiology, laboratory, pharmacy and emergency. We adhere to long term comprehensive care for both common and complex illnesses well-supported by modern infrastructure, latest technology and state-of-the-art monitoring equipments.

- State of the art ICUs
- Best OPD Complex
- Advanced Radiology & Imaging Services







DEPARTMENT OF  
**RHEUMATOLOGY**

The Department of Rheumatology provides optimal patient health by fostering basic, clinical and translational research and providing compassionate, state-of-the-art diagnostic and therapeutic care. Our centre embraces a philosophy of integrative care for all rheumatological disorders.

## SERVICES

- » Systemic Lupus Erythematosus (SLE)
- » Anti-phospholipid antibody syndrome
- » Rheumatoid Arthritis
- » Crystallarthropathies : Gout/PPD
- » Spondyloarthropathies: Ankylosing Spondylitis/Psoriatic Arthritis
- » Primary Sjogren's Syndrome
- » Scleroderma (systemic sclerosis)
- » Vasculitis
- » Behcet's Syndrome
- » Fibromyalgia
- » Myositis
- » Metabolic Bone Disease
- » Osteoporosis
- » Osteoarthritis
- » Juvenile Idiopathic Arthritis
- » Auto-inflammatory Syndromes
- » Pediatric Rheumatology
- » Primary Immunodeficiency Disorders
- » Others: Biological Therapy
- » Intra-articular Injections

## INFRASTRUCTURE & TECHNOLOGY

At Jaypee hospital the department of Rheumatology & Clinical Immunology is fully equipped for world class investigative & therapeutic services of all kinds of rheumatological and primary immunodeficiency disorders .







## DEPARTMENT OF OPHTHALMOLOGY

The Department of Ophthalmology is dedicated to providing state-of-the-art comprehensive range of medical, surgical and reconstructive services in all aspects of adult and paediatric ophthalmology. The best-in-class eye surgeons, the latest and highly sophisticated medical equipments and all types of high-end facilities under one roof makes Jaypee Hospital the best choice in the field of eye care.



## SERVICES

- » Comprehensive Ophthalmic Examination
- » Refractive Surgeries
  - LASIK
  - PRK
  - ICL/IPCL
- » Advanced Cataract Management
  - Phacoemulsification with O ZIL
  - MICS
- » Glaucoma Services
  - Optic Disc & RNFL Studies with advanced CIRUSOCT
  - Fundus photography & evaluation
  - Gonioscopy
  - Visual field analysis with Static Perimeters
  - NdYAG Procedures for filtration
  - Trabeculectomies with Ologen
  - Valve implant - Ahmed
  - Valve implant - Xpress
- » Vitreo Retina Services
  - Fundus angiography
  - Full range OCT
  - Advanced VR surgery with Constellation
  - Diabetic retinal disorder management
  - Retinopathy of Prematurity management
  - All types of Retinal disorder management
- » Squint Management
- » Oculoplasty & Aesthetics
- » Ocular Oncology
- » Neuro - Ophthalmology



## INFRASTRUCTURE & TECHNOLOGY

Our high-end infrastructure includes state-of-the-art fully-equipped operation theatres, post-op lounge with recliners/beds, advanced eye care equipments, complete range of optical frames & lenses. Our patient orientation programme, fully equipped facility, cutting-edge technology and knowledge-sharing platform facilitate superior clinical outcomes based on accurate diagnosis for almost all kinds of eye conditions. The technologies used include

**Phaco + Vitrectomy for Anterior and Posterior:** This vision system is an ophthalmic microsurgical system that is indicated for both anterior segment (i.e., phacoemulsification and removal of cataracts) and posterior segment (i.e., vitreoretinal) ophthalmic surgery. It is a micro-coaxial technology; an element that permits less invasive procedures without compromising surgical techniques or lens removal technologies that results in better surgical outcomes and safety than with traditional phaco-emulsification equipment. The systems are configured with options for efficient and safe cataract lens removal offering a combination of unparalleled fluidics.

**LASIK:** To make the vision defect correction procedure safe, patient friendly and customised, all the parameters of this ultra-modern work platform are oriented towards increasing efficiency, achieving optimum treatment results and the rapid recovery of vision. Its key features are very high ablation rate, the high-performance eye-tracker system and individual treatment planning with the optional CRS-Master.

**Other major equipments:** Visual Field Analyser (Perimeter), High Definition Optical Coherence Tomography (OCT), YAG Laser, Slit Lamp, Fundus Camera for Fundus Fluorescein Angiogram, Green Laser with LSL + LIO + Endo, Keratometer, Autorefractometer, and much more.

**State-of-the-art:** Constellation equipment with facility for 26G/27G Micro-vitreo-retinal procedures for intricate and complicated retinal disorders.





DEPARTMENT OF  
**EAR, NOSE  
& THROAT**

The Ear, Nose and Throat Centre at Jaypee Hospital is dedicated towards delivering comprehensive care for all head and neck diseases, sleep disorders, hearing and balance problems. The state-of-the art facility is empowered by a highly skilled team of trained ENT surgeons practicing to deliver superior clinical outcomes in curing major ENT problems.

## SERVICES

- » Micro-ear Surgery – Discharging Ear, Deafness, Vertigo, Facial Nerve Paralysis
- » Cochlear Implant, BAHA
- » Neuro-otology and Skull Base Surgery
- » Endoscopic Sinus Surgery
- » Minimally Invasive Sinus Surgery
- » Microlaryngeal Surgery & Phonosurgery – For laryngeal & voice disorders
- » Surgery for Snoring and Sleep Apnea
- » Coblation Tonsillectomy and Microdebrider- assisted Adenoidectomy
- » Neck Surgeries like Surgery of Thyroid Gland, Parotid Gland, and Sub-Mandibular Gland
- » All Pediatric ENT surgeries
- » Audiological Assessment And Rehabilitation
- » Speech Assessment and Therapy



## INFRASTRUCTURE & TECHNOLOGY

### **Surgical Microscope:**

S7 microscope from Zeiss offers apochromatic optics, bright illumination and an integrated SD camera

Vario 700 microscope from Zeiss provides high end optics, xenon illumination and integrated video system for micro-ear surgeries and phonosurgery

Pentero 900 microscope from Zeiss offers brilliant visualisation , razor-sharp video images in full HD quality touch screen, observational tube and excellent stereoscopic control for neuro-otology and skull-base surgeries

OPMI Pico microscope from Zeiss for performing simple outpatient procedures

**Triple Endoscopy (from Karl Storz):** An advanced endoscopy system with high quality, superior performance through HD video camera and monitor.

**Microdebrider (from Bien Air):** A powered surgical tool that allows greater surgical precision and faster surgeries with decreased bleeding and a better visualised surgical field.

**Audiology (from GSI):** Audiometer to carry out Pure Tone Audiometry, Speech Audiometry and Impedance Audiometry for accurate assessment of hearing loss. In addition, we also have advanced audiological equipments to carry out OAE, BERA and ASSR.

**Speech Therapy:** We provide comprehensive speech services as well as detailed diagnostic evaluation by trained specialists to offer speech and/or language intervention, cochlear implant and auditory rehabilitation.





We are committed to deliver state-of-the-art quality imaging services in our fully-equipped facility that offers most advanced diagnostic and interventional applications to diagnose various diseases with accurate precision and clarity. We have the most advanced radiology department equipped with 3.0 Tesla MRI, 256 Slice CT, Ultrasound, Digital X-Rays, Fluoroscopy, Digital Mammography, Bone Densitometry and Digital Radiography along with PACS (Picture Archiving and Communication Systems)

## SERVICES

- » **Diagnostic Radiology**
  - General Radiology & Mammography
  - Ultrasound
  - CT Scan
  - MRI Scan
  - Bone Densitometry
  - Fluoroscopy
  - Interventional Radiology
  - Digital X-ray
  - Image (US/ CT ) guided interventions
- » **Interventional Radiology**
  - Peripheral vascular interventions
  - Neurovascular interventions
  - GI / Biliary Interventions
  - Renal / Urogenital Intervention
  - Uterine Artery Embolisation
  - Laser / RFA Ablation of Varicose verona



## INFRASTRUCTURE & TECHNOLOGY

**3.0 Tesla fully digital MRI-Ingenia 3T ,Philips:** Used to provide remarkably clear and detailed pictures of internal organs and tissues. The technique has proven very valuable for the diagnosis of a broad range of pathologic conditions in all parts of the body, including cancer, heart and vascular disease, stroke, joint and musculoskeletal disorders. The 3.0 T MRI has the first ever direct digital broadband channel independent transmission that provides crystal clear high quality images by eliminating artifacts. The wide bore magnet increases patient comfort.

**256 slice CT with spectral imaging** Discovery CT 750 HD Freedom edition with advanced cardiovascular features of snap shot

- Cardiac spectral CT
- Efficient imaging at an optimized dose
- Serves a broad range of applications like cardiac, angiography, chest, abdomen and more
- Allura Xper FD 20/20 Bi-plane DSA Machine 3D Navigation







## DEPARTMENT OF LABORATORY MEDICINE

The Department of Laboratory Medicine at Jaypee Hospital offers a wide range of investigations with special emphasis on delivering high quality reports in accordance with international standards and guidelines to produce precise and accurate test results. It is equipped with world-class equipments and facilities and adheres to stringent external and internal quality control parameters of NABL ISO 15189; 2012 and JCI.

## SERVICES

- » Clinical Biochemistry
- » Haematology
- » Histopathology and Cytology
- » Clinical Pathology
- » Microbiology
- » Serology



## INFRASTRUCTURE & TECHNOLOGY

### **Flow cytometry using six colours with a fully automated workflow (BD FACS Canto™ II)**

A fully automated flow cytometry systems for indispensable workups of both benign and malignant hematopoietic disorders including acute leukemias, chronic lymphoproliferative disorders, paroxysmal nocturnal hemoglobinuria, acquired and congenital immune deficiency syndromes, platelet function disorders and stem cell counts.

### **Hematology Analyzer (Sysmex XN-1000™)**

Hematology analyzers of capability to give 8 parts differential includes advanced clinical parameters, including NRBCs with every CBC and Immature Granulocytes with every differential

### **Automation in identification and susceptibility (VITEK 2 compact systems Biomerieux)**

State of art automated identification and susceptibility testing systems for rapid and accurate reporting.

### **Automation in microbial detection system Bact/ALERT 3D**

Most advanced detection technology with unsurpassed performance in the detection of a wide variety of micro-organisms.

### **Liquid based cytology (The BD SurePath liquid-based cytology)**

FDA approved thin-layer cell preparation process intended for use in the screening and detection of cervical cancer, pre-cancerous lesions and atypical cells defined by Bethesda System for reporting cervical cytologic diagnosis.

### **Frozen section (Leica biosystems CM1950)**

State of the art cryostat system for immediate, reliable and safe reporting of frozen sections intra-operatively.

### **Fully Automated biochemistry Autoanalyser with 5 integrated technology (Vitros 5600 System)**

### **Real time instrument (Rotor-Gene Q 5plex HRM Platform)**

Real time instrument with latest technology for detection and quantification of existing and emerging infectious diseases.







DEPARTMENT OF  
**TRANSFUSION  
MEDICINE  
(BLOOD BANK)**

We adhere to evidence based transfusion practices and follow stringent quality control measures in terms of blood donation, testing of blood products and transfusion practices. We are one of the very few to implement ISBT 128 Barcoding System. Our Blood Bank is NABH accredited.

## SERVICES

- » 100% blood components therapy
- » Leukodepleted cellular & Rh, kell pheno matched blood components
- » Therapeutic Plasma exchange for various indications in neurology, haematology, oncology etc.
- » Therapeutic plasma exchange using specialized filters in ABO mismatch Liver and Kidney transplants.
- » Peripheral blood stem cells (PBSC) harvest.
- » Reference Laboratory Services:
  - Direct & Indirect Antiglobulin testing (DAT & IAT)
- » Irregular antibody screening and identification ( 3 Cell Panel)
  - Extended red cell phenotyping (11 Cell Panel)
  - Platelet cross matching and human platelet antigen
  - Antibody titration of isoagglutinins (anti-A,B) & anti-D
  - Complete serological evaluation of AIHA (Auto-Immune Haemolytic Anaemia) cases
  - Adsorption and elution studies
  - Saliva studies for secretor status and to resolve blood grouping discrepancies



## INFRASTRUCTURE & TECHNOLOGY

We have high-end equipments required for collection processing and storage of blood components. We also have a state-of-the-art apheresis technology for plateletpheresis and other apheresis procedures to meet the demand of the oncology, neurology and other critically ill patients.

**Full automation for safe blood transfusion:** To reduce incidences of human error and consequential transfusion hazards, we have full automation for blood grouping, pre-transfusion testing & viral markers screening (HIV I/II, HBV & HCV). Viral screening of blood donors is done with Vitros 3600 & pre-transfusion testing are done with Gamma Immuco NEO and Column Agglutination Technique (CAT)

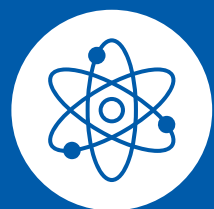
**Apheresis using Fresenius Kabi:** Plateletpheresis, plasma exchange, stem cell harvest, LDL apheresis, Red Cell Exchange, etc are done with fully automatic apheresis platform - COM.TEC

**ISBT 128 Barcode:** World's most trusted bar coding system in blood banking is with us.

**ID NAT Testing** - Most trusted technology in molecular testing of blood donors for HIV, HBV & HCV







## DEPARTMENT OF NUCLEAR MEDICINE

The Department of Nuclear Medicine is a facility of global standards that provides comprehensive range of clinical services in radioisotope imaging and therapy. We endeavour to deliver advanced solutions to various diseases and fundamental insights into the complex workings of the human body. The department is well equipped with PET CT, SPECT CT & High dose therapy ward for treatment of thyroid cancer using radio iodine.



## SERVICES

### » Oncology

- Wholebody PET-CT scan (Contrast/Non-contrast)
- Wholebody PET-CT scan (Triple Phase)
- 1-131 MIBG scan
- 1-131 whole body scan

### » Cardiac

- Stress/Rest Myocardial Perfusion Scintigraphy
- MUGA scan
- Cardia PET scan

### » Kidney

- Renal DTPA scan
- Captopril Renogram
- Renal Transplant evaluation
- Renal DMSA scan
- DRCG scan
- Testicular scan

### » Endocrine

- Thyroid scan (TC-99m)
- Radioactive Iodine (1-131) uptake and scan
- Parathyroid scan (Sestamibi)

### » Pulmonary

- Lung ventilation & lung perfusion scan
- Shunt diagnosis in Cirrhosis/ Congenital heart disease and other conditions

### » Brain

- 99m TC ECD scan & PET Scan in dementia, movement disorders, epilepsy, neuropsychiatric disorders

### » Gastro-intestinal

- Gastri emptying study
- Gastroesophageal reflux study
- Gastro-intestinal bleed study

- Meckel's scan
- Hepatobiliary scan (HIDA scan)
- Liver transplant evaluation
- » **Skeletal System**
  - Bone Scan metastatic skeletal survey, growth & metabolic disorders



## INFRASTRUCTURE & TECHNOLOGY

**PET CT:** The revolutionary FlowMotion technology, Biograph mCT Flow equipped with 64-slice CT is the India's first state-of-art PET CT system with continuous motion of the patient table while scanning. Biograph mCT flow permits CT radiation dose reduction and injected dose of radiopharmaceuticals (FDG) by 50% while delivering excellent image quality. Comfort of the patient is also ensured due to wide bore gantry and 30-40% reduced acquisition time of PET (5 minutes) and wholebody CT (10 seconds).

**SPECT CT:** Our 6 slice SPECT-CT for diagnostic quality imaging integrates two technologies to view the body: Computed Tomography (CT) and Radio-Active Material (tracer). The TruePoint SPECT-CT technology also reduces exam time by utilising a range of CARE (Combined Applications to Reduce Exposure) radiation solutions to keep radiation exposure of patients to a minimum. T-2100 treadmill is available for patients requiring exercise stress thallium studies. Thyroid uptake probe for accurate quantification of thyroid function also available.

**HIGH DOSE THERAPY WARD:** We have 2-bed high dose therapy ward for treatment of thyroid cancer using radioiodine.





DEPARTMENT OF  
**SPORTS MEDICINE  
& REHABILITATION**

At Jaypee Hospital's Department of Sports Medicine and Rehabilitation we cater to the rehabilitative needs of our major specialities ranging from neurology, cardiology, sports injuries, orthopaedics, paediatrics and critical care supported by major high-end equipments.



## SERVICES

- » **Shoulder joint**
  - Arthroscopic stabilization of shoulder for acute & recurrent dislocation
  - Slap repair
  - Arthroscopic repair of rotator cuff tear
  - Arthroscopic sub acromial decompression for impingement syndrome
  - Arthroscopic acromio clavicular joint stabilization/ excision
  - Biceps tenodesis
  - Latarjet procedure
- » **Knee**
  - Arthroscopic ligament repair ACL | PCL | MCL | LCL
  - Arthroscopic assisted meniscal repair/partial meniscectomy
  - Arthroscopic assisted intra articular fracture fixation
  - Arthroscopic assisted repair of cartilage disorder Mosaicplasty (OATS) | ACI | Microfractures
  - MPFL reconstruction for patellar disorder
- » **ANKLE**
  - Arthroscopic assisted lig repair
  - Arthroscopic assisted joint debridement for impingement
  - Arthroscopic assisted microfractures
  - Tendo achilles repair
- » **ELBOW**
  - Arthroscopy
  - Biceps tendon repair
- » **Physio Rehabilitation Services**
  - Sports specific injury prevention program
  - Mobility, strength & endurance protocol
  - Post surgical & arthroscopic rehabilitation
  - Back to track program
  - Performance upgradation
  - On field services
  - Sports fitness training & conditioning



## INFRASTRUCTURE & TECHNOLOGY

The state of the art fully equipped facility is supported by world class electrotherapy equipments manufactured by Pagani, Enrof Nonius etc.

Our exercise therapy equipments like Gait trainer, Unweighing system and balance system are a few latest modalities available only in a few places across the country.

In our Pediatric Rehabilitation we have successfully treated a wide range of pediatric neurological conditions like CP, Muscular dystrophy, Post operative neurological problems.

### Some of the facilities at our department:

#### Electrotherapy

**Laser:** Used in inflammatory conditions like Tendinitis, Tissue healing.

**Pneumatic Compression:** Used for Oedema, Swelling and Lymphatic drainage.

**Combined Interferential And Ultrasonic:** Used for Neural pain, Muscle re-education and Scar tissue mobilisation.

**Microwave Diathermy:** Used in Arthritis of large joints, Lower backache.

**Pulsed Electromagnetic Radiations:** Used as Anti-inflammatory, Joint pains and Muscle aches.

**Cervical And Lumbar Traction Unit:** Used for the Mobilization of Vertebral column.

#### Exercise Therapy

**Unweighing System:** Used for the Re-education after Fracture, Joint replacements.

**Balance Trainer:** Used in Stroke, Amputation, Ataxia.

**Dynamic Stairs:** Used in Post operative training.

**Gait Trainer:** Used in Post sports injury, Neurological cases.

**Co-ordination / Cognitive Therapy Unit:** Used in Parkinsons, Brain injury.

**Continuous Passive Movement:** Used after Joint replacements, Fractures.





DEPARTMENT OF  
**DENTAL  
SURGERY**

The Dental Department at Jaypee Hospital offers every discipline of quality dentistry. The Department's highly skilled and expert staff provides preventive dentistry programs to school children as well as adults and seniors. Oral cancer screening programs are also frequently performed at all our community health fairs.

## SERVICES

- » Root Canal Treatment Single Visit
- » Dental Implants for Teeth Replacement
- » Smile Designing
- » Tooth Cleaning
- » Crown & Bridge
- » Bleaching of Teeth (Zoom)
- » Oral Cancer Screening
- » Laminates and Veneers
- » Maxillofacial and Trauma Management
- » Paediatric Dentistry
- » Sleep Dentistry
- » Full Mouth Rehabilitation
- » Correction of Misaligned Teeth without Braces
- » Laser Dentistry



## INFRASTRUCTURE & TECHNOLOGY

We have high-end digital dentistry required for cosmetic dentistry and maxillofacial trauma

**Digital OPG Machine** provides high resolution maxillofacial images in various modes to provide accurate diagnosis with minimum radiation exposure to the patients to achieve precision in implant restoration and planned dental surgeries.

**RVG Dental X-ray:** The digital radiography sensors produce crystal-clear images to give an instant access to the highest quality intra-oral images to make accurate diagnosis. Latest digital X-ray technology is used to provide a detailed image of the entire mouth with 80% less radiation than traditional film X-rays.

**Sterilization:** The Department follows strict sterilization protocols as per international standards. The flash sterilization procedure ensures fast, complete and effective infection control.

**Minimally invasive surgery:** Minimally Invasive Maxillofacial Surgery, first ever in India.

**Laser therapy:** Cutting edge Laser Dental Therapy with minimal blood loss.







## DEPARTMENT OF BEHAVIOURAL SCIENCES

Our Department of Behavioural Sciences is the ultimate destination for all healthcare needs related to mental and behavioural wellbeing. Our highly ethical and compassionate treatment approach has changed the perception about mental and behavioural health services among our patients. We believe in providing the highest level of comprehensive care to all our patients who deserve emotional or psychological support.



## SERVICES

### » General Adult Psychiatry

- Anxiety Disorders: Phobias, generalized anxiety disorders, panic attacks, post traumatic stress disorder (PTSD), Obsessive Compulsive Disorder(OCD), Dissociative Disorder
- Mood Disorders: Depression, Bipolar Affective Disorder, Dysthymia
- Psychotic Disorders: Schizophrenia, Schizoaffective Disorders, Delusional Disorder
- Sleep Disorders
- Eating Disorders: Bulimia, Anorexia Nervosa
- Sexual Disorders
- Substance Related Disorders
- Gender Identity Disorders

### » CAMHS (Child and Adolescent Mental Health Service)

- Psycho-diagnostic Assessment and Development Focused Therapy
- School Mental Health Service

### » Child and adolescent psychiatry

- Academic Poor Performance
- Learning Difficulties
- Sleeping and Eating Problems
- Attention Deficit Hyperactivity Disorder (ADHD)
- Conduct Problems: Aggressive, Defiant, Truancy, Destructive Behaviour
- Autistic Spectrum Disorders (ASD)
- Emotional and Behavioral Problems
- Depressive Disorders
- Sleep Problems
- Substance Abuse
- Sexual Deviant Behaviour
- Relationship Issue
- Anger Disorders

### » Deaddiction services

- Drug, Tobacco, or Alcohol abuse

### » Old Age Psychiatry

- Delirium
- Dementia

### » Neuropsychiatry

- Memory Clinic Psycho Therapy
- Organic Mental Health Problems

### • Memory Clinic

- Neuropsychic Assessment

### » Psycho-sexual & Gender Identity Disorder

- Marital Issues
- Relationship Issues
- Gender Issues
- Orientation Issues



### Stress management and counselling

- Individual Counselling
- Premarital Counselling
- Marital Therapy / Couple Therapy
- Family Therapy
- Relationship Counselling
- CBT (Cognitive Behaviour Therapy)

### Substance Misuse

- Alcohol Dependency, Nicotine Dependency & Smoking Cessation Services

### Psychotherapy/Counselling:

- CBT
- Stress Management
- Parenting Counselling/Development
- Cognitive Behaviour Therapy



# OUR FACILITIES

## JAYPEE HOSPITAL HAS BEEN DESIGNED FOR FUTURE WITH 7 STAR FEATURES:

### PNEUMATIC TUBE SYSTEMS

While doctors and nursing staff dedicate themselves to the patients, the pneumatic tube system transports a multitude of small and medium-sized items. This system saves not only time, but also space: laboratories are centralized and stocks in the decentralized medicine storage depots can be reduced. Furthermore, the pneumatic tube system helps increase efficiency since the staff is no longer busy running errands, allowing the wards to stay occupied all the time.

### WORLD CLASS TECHNOLOGY

Complete in-house technology set up enabling us to provide best treatment. To name few - one of its kind Flow Motion Technology in PET CT (1st in South Asia) & radiation dose reduction-FD 10 Technology (1st in the country) & MEL 90 which is world's fastest Lasik equipment.

### UNIQUE INFECTION CONTROL PROTOCOL

To ensure infection free environment across critical areas like ICUs, IPDs, Isolation Rooms with one of its kind air-flow mechanism. Dedicated Critical Chiller Unit ensuring proper functioning of patient care 24 x 7, even in case of power failures.

### RATED AS GREEN BUILDING

With advanced building automation system, Jaypee Hospital has been rated as green building

### RAIN WATER HARVESTING

Complete Compound has been designed in a way to harvest & conserve the rain water, making it environment friendly.

### COMPLETE LED LIGHTING

In order to save electricity and support national saving.

### IMPORTED LAUNDRY

Completely in-house laundry management with state-of-the-art imported machines ensuring best hygiene.

## IN-PATIENT CARE

Jaypee Hospital has a state-of-the-art world class infrastructure to ensure comprehensive care for every patient.

### IPD and ICU

The levels between the 3rd and 7th floors are dedicated to patient rooms and intensive care units (ICU). We have dedicated critical care units for trauma, cardiac, surgical, medical, paediatrics & neonatal care facility. An entire floor is dedicate for women care, birthing suites and IVF day care rooms. Three floors are dedicated to IPD rooms with single, double and multi-bed options. We have separate isolation wards for transplant patients and patients whose immunity have been compromised. We have exclusive deluxe suites on 7th floor for VIP patients as well.

### PATIENT ACCOMMODATION

We have patient accommodation options for people from different walks of life.

- **MULTI**  
Our multi-sharing rooms are three, four & five-bedded units. Each unit has a TV with multiple channels, direct dialing and a two-way nurse call system for each patient.
- **TWIN**  
Two patients share these rooms wherein each patient's relative has a separate couch.
- **DELUXE**  
These are spacious single rooms, which are self contained with a bathroom, a sofa cum bed for a relative, TV with multiple channels, fridge, direct dialing, two-way nurse call system and a personal safe.
- **ISOLATION ROOMS**  
There are 10 isolation beds in our hospital. These are basically single rooms where patients are admitted to prevent the outbreak of an infection. While Positive pressure rooms are used to accommodate patients at risk of contracting infections easily,

negative pressure rooms are used to accommodate patients who may be infected and spread infection to others.

- **VIP SUITE**  
VIP patients choose our VIP Suite & receive the same high-quality care unique to all Jaypee patients, while enjoying special amenities and services. Each suite provides guests with the utmost in privacy and comfort.

### OPERATION THEATRES

Jaypee Hospital has 18 operation theatres across six independent clusters that are equipped with laminar air flow system, ceiling-mounted pendants, anti-static and anti-bacterial flooring. The hospital has dedicated operation theatres for neurosurgery, cardiac surgery, organ transplant surgery, joint replacement and minimal access surgery. The medical equipment in our operation theatres matching the best in the world. Our operation theatres for obstetrics, cosmetology and IVF are world class and are located within their respective clusters, thereby limiting movement of the patients from one area to another.

### FOOD COURT

We have multiple food courts which includes, a Cafe Coffee Day that serves a mix of regional and global cuisines.

### ATM

ATM facility is available at the ground floor of the hospital and there is also one outside the food court.

### PRAYER ROOM

A Prayer Room for the attendants & relatives is being built at 2nd floor.

### PHARMACY

Pharmacy services are available 24/7.

### AREA

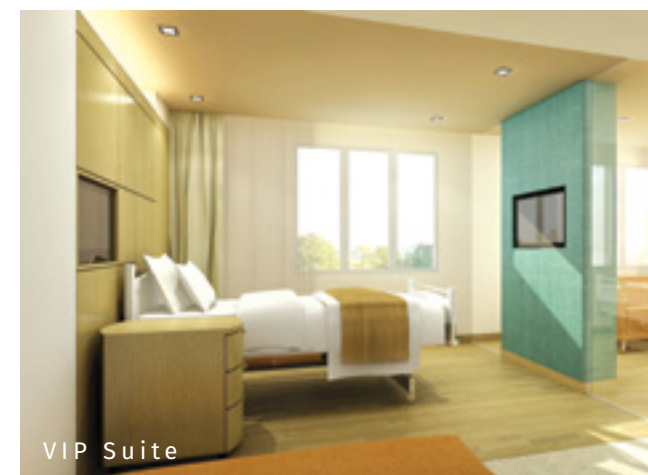
With a total built up area of more than 9 lacs sq. feet, hospital is spread across 25 acres of land.

### AUDITORIUM

With its best in-class acoustics and in-house event facilities, the auditorium at Jaypee is geared to host all sorts of medical conferences and clinical workshops.



Main Lobby



VIP Suite



Auditorium



# ABOUT THE JAYPEE GROUP

Ever since its inception five decades ago, transforming challenges into opportunities has been the hallmark of the Jaypee Group. The Group is a diversified infrastructure conglomerate with business interests in:

- » Engineering & Construction
- » Cement
- » Power
- » Real Estate
- » Hospitality
- » Fertilizer
- » Expressway
- » Healthcare
- » Sports
- » Education (non-profit)

## ENGINEERING & CONSTRUCTION

The Engineering & Construction wing of the group is an acknowledged leader in the construction of multi-purpose River Valley and Hydropower projects. It has the unique distinction of having simultaneously executed 13 Hydropower projects spread across 6 states and the neighbouring country Bhutan for generating 10,290 MW power.

## CEMENT

The group is one of the largest cement producers in the country. Its cement division currently operates modern, computerized process control cement plants.

## POWER

After having established a strong presence in the Hydropower sector, the group has initiated its entry into Thermal Power Generation and Power Transmission. The group's current power generation capacity is 2220 MW and will be 4200 MW by 2016.

## REAL ESTATE

The group is a pioneer in the development of golf centric Real Estate projects. It has developed Jaypee Greens, India's first such project - a world-class fully integrated complex stretched over 452 acres to include one 18 hole Greg & Norman Golf Course, residential & commercial spaces, corporate park, entertainment centre and nature in abundance.

## HOSPITALITY

The group's hospitality division owns and operates 6 properties spread across New Delhi, Uttar Pradesh and Uttarakhand. Four 5 Star Hotels, two in New Delhi and one each in Agra and Mussoorie and a 5 Star Luxury Resort with SPA has been set up in collaboration



with SIX SENSES at Greater Noida. Apart from this, Jaypee Delcourt at Greater Noida is a viable destination for corporate, entrepreneurs, expats, business & leisure stays.

## Fertilizer

Kanpur Fertilizers & Cement Ltd., a Jaypee Group initiative operates a urea plant situated at Panki, Kanpur which is one of the oldest Urea manufacturing plant in the country with an installed capacity of 7.22 lac MT per annum. The feed stock was successfully converted from Naphtha to Natural gas and currently prilled urea having low moisture content and very low Bi-urate content is being produced by using latest technology. The company has also entered into the value added agri inputs space by marketing specialty inputs like Micro nutrients, Zinc Mono & Hepta hydrate, Sulphur, Ferrous sulphate, Boron and Zyme etc. under the flagship brand of Jaypee Chand chaap. Other major fertilizers e.g. Single Super Phosphate, Di Ammonium Phosphate & complex fertilizers are also regularly marketed as per demand of farmers.

## EXPRESSWAY

The Group has constructed the 165 km long 6 lane Yamuna Expressway project stretching from Noida to Agra. Holistic development on 6175 acres at five locations along the Expressway for commercial, industrial, institutional, residential and amusement purposes are being undertaken as an integral part of the project. Connectivity to Agra is India's largest access control concrete expressway.

The Group has also constructed the Zirakpur-panwan section of NH-5. The Jaypee Group has been awarded the contract for construction, development and maintenance of the eastern peripheral expressway package III.

## SPORTS

The Group has hosted India's first ever Formula One Grand Prix on 30th October, 2011. In addition to F1, the track has also been hosting other top-level international motor sports events from 2012 onwards. It will also home an International Standard Cricket Stadium, 18 hole Golf Course and state-of-the-art stadium for indoor and outdoor sports.

## EDUCATION

The Group currently provides education across all spectrum of the learning curve through its 32 Schools, 7 Private ITI's, 1 Post Graduate College, 1 B.Ed. College, and 4 Universities catering to over 30,000 students. The Jaypee education system plans to take the vision of service to society through quality education to another level by expanding its infrastructure to provide education to a strength of 200,000 students in less than a decade from now.